

OPTO ENGINEERING



OPTICAL IMAGING TECHNOLOGIES

## OEMV STARTER KIT

Machine Vision Starter kit for beginners

## OEMV LAB KIT

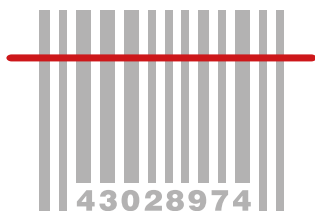
Machine Vision advanced kit for experts





This **OEMV Starter Kit** can help you solve many different types of vision tasks, such as defect detection, shape recognition, barcode reading, OCR, color check, counting, presence / absence detection... etc.

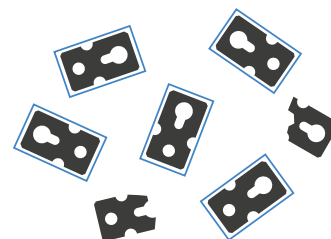
### Application examples



Barcode recognition.



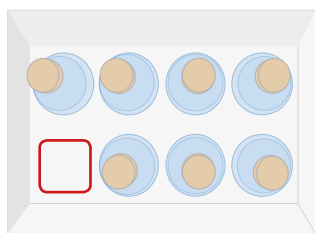
Color sorting.



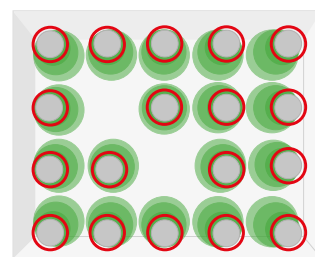
Object identification.



Liquid level inspection.



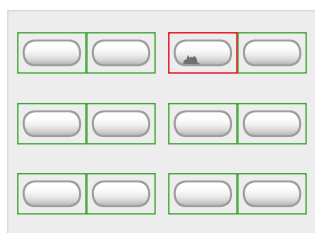
Presence/Absence.



Counting.



OCR - OCV



Defect Detection.



Packaging / labeling inspection.

Part number	Product type	Kit content	Description
MVKIT-STR	SOFTWARE	FIS-PRO	Fabimage software
		USB-DONGLE-FI	USB Dongle for software
	CAMERAS	COE-050-M-USB-050-IR-C	Area Scan camera, 2/3", 5 Mpix USB, B/W
	LENS	EN5MP1616 <sup>1</sup>	Fixed focal lens for 5MP camera, focal length 16 mm
		EN5MP2514 <sup>1</sup>	Fixed focal lens for 5MP camera, focal length 25 mm
	ILLUMINATORS	LTZGK100-15-5-W-24V <sup>2</sup>	LED ringlight, 5 LED rows, outer diameter 103 mm, 15°, white, 24V
		LTZZO130-75-3-R-24V <sup>2</sup>	LED low angle ringlight, 3 LED rows, outer diameter 131 mm, 75°, red, 24V
		LT5WRG200-00-1-W-24V <sup>2</sup>	LED dome light, 232 mm outer diameter, white, 24V
		LTPVR100-00-1-R-24V <sup>2</sup>	Flat side-emitting LED backlight, 100x100 mm illumination area, red, 24V
	ACCESSORIES	CMLT5WRG200-00-X	Bracket for LED dome light, 232 mm outer diameter
		DFLTZZO130-75-3	Illumination diffusers for LTZZO130-75-3-R-24V
		DFLTZGK100-15-5	Illumination diffusers for LTZGK100-15-5-W-24V
		LTICGR1000-D1-PS-XX <sup>3</sup>	Lighting Controller
		CBSLH-24V-F-3M	Illuminator cable
CBUSB3001		Camera USB cable	

<sup>1</sup> Can be replaced with EN5MP1216, EN5MP3514, EN5MP5018.

<sup>2</sup> Can be replaced with White, Red, Blue, Green light.

<sup>3</sup> Available with -EU, -UK or -US plug.

# OEMV LAB KIT

Machine Vision advanced kit for experts



**NEW**



The **OEMV Machine Vision Lab Kit** is suitable for experienced machine vision users that would like to better equip their vision labs and perform advanced feasibility studies in house prior to designing a machine vision system.

The OEMV LAB KIT includes an extremely powerful and intuitive machine vision software, a 12 MP industrial camera, 5 high resolution fixed focal length lenses and a 50 mm FoV Telecentric lens, in addition to 5 different LED illuminators and a 4-channel ethernet controller to tackle the most challenging vision applications.

Together with the kit, you will also gain free access to a one-day Machine Vision Advanced Training Class held by our Tech Specialists in one of our local labs. This class will allow you to deepen your knowledge of machine vision techniques and to discuss how to solve advanced applications directly with our Experts.

## KEY ADVANTAGES

### Learn from the Opto Engineering's Experts

1 day of advanced training with our Tech Specialists to deepen your knowledge of Machine Vision.

### Complete bundle for high resolution applications

Includes 12MP camera, 5 high resolution lenses and 1 high resolution 50 mm FOV Telecentric lenses.

### Intuitive image processing software

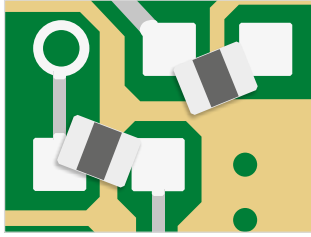
Data-flow based system, no low-level programming knowledge required.

### Smart Investment

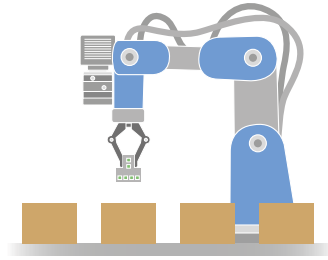
Solve advanced applications in a breeze and your investment will be repaid in no time.

The **OEMV Lab Kit** is ideal for more complex vision tasks including inspection of highly reflective samples, robotic pick and place, detection of minute defects, high accuracy gauging, 3D measurement... etc.

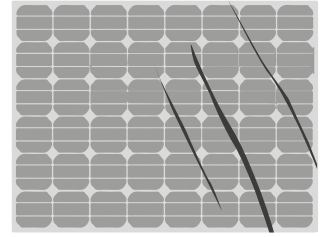
## Application examples



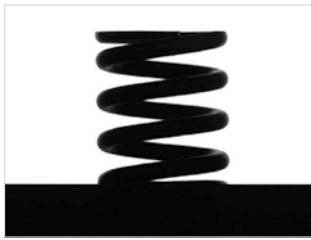
PCB parts inspection.



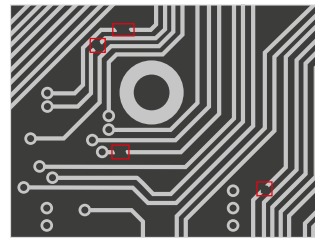
Robot guidance for fast pick and place.



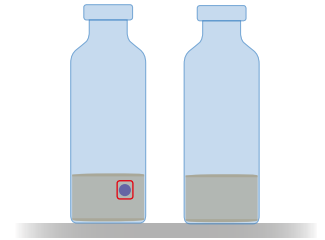
Surface inspection.



High accuracy measurement with Telecentric lens.



Defect detection.

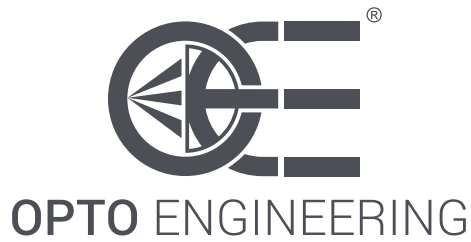


Particle Detection.

Part number	Product type	Kit content	Description
MVKIT-LAB	SOFTWARE	FIS-PRO	Fabimage software
		USB-DONGLE-FI	USB Dongle for softwarez
	CAMERAS	COE-123-M-POE-080-IR-C	Area Scan camera, 1.1", 12 Mpixel, GigE, B/W
	LENS	EN10MPL1220	Fixed focal lens for 12MP camera, focal length 12 mm
		EN10MPL1620	Fixed focal lens for 12MP camera, focal length 16 mm
		EN10MPL2520	Fixed focal lens for 12MP camera, focal length 25 mm
		EN10MPL3520	Fixed focal lens for 12MP camera, focal length 35 mm
		EN10MPL5020	Fixed focal lens for 12MP camera, focal length 50 mm
		TC3MHR048-C	High resolution telecentric lens for 1.1" detectors, magnification 0.303x, C-mount
	ILLUMINATORS	LTRN048NW 1	Ring LED illuminator, inner diameter 75 mm, straight type, white
		LTZZO130-75-3-R-24V 1	LED low angle ringlight, 3 LED rows, outer diameter 131 mm, 75°, red, 24V
		LT5WRG200-00-1-W-24V 1	LED dome light, 232 mm outer diameter, white, 24V
		LT2QOG070-00-X-W-24V 1	LED coaxial light, 70x70 mm light emitting area, white, 24V
		LT2BC096072-G 1	High uniformity continuous LED backlights, 96 x 72 mm x mm, green, 525 nm
	ACCESSORIES	FTBP470M40.5	Blue (470 nm) bandpass filter with M40.5 mount for fixed focal lenses.
		FTBP525M40.5	Green (525 nm) bandpass filter with M40.5 mount for fixed focal lenses.
		FTBP635M40.5	Red (635 nm) bandpass filter with M40.5 mount for fixed focal lenses.
		RT-PR032-40.5	Linear polarizer filter. Mount Thread M40.5 x P 0.5
		CMHO048	Clamping mechanics for TCxx048 lenses and LTCLHP048-X illuminators
		CMLT5WRG200-00-X	Bracket for LED dome light, 232 mm outer diameter
RT-POE21U-1AF		56V Power Over Ethernet (POE) 1 Port Iniettoire metà intervallo 10/100/1000 Mbps Data Rate	
RT-SDR-75-12		DIN Rail Power Supplies 75.6W 12V 6.3A DinRail Power Supply	
CBETH003		Ethernet cable, CAT6, industrial level,high flexible cable with screw, 5m	
COE-6P-OPEN1-030		HIROSE 6-pin/Open end cable, 3 meters	
LTDVE4CH-20		Strobe controller 4 channels	
RT-70261132 2		Power cord	
RT-SDR-120-24		Power supply	
CBSLH-24V-F-3M	Illumination cable, side A flying leads, side B SM 3 way female connector, 24V - 3 m		
CBSLH-24V-F-3M-TB	Illumination cable, side A SM 3 way male connector, side B terminal blocks connector, 24V - 3 m		

1 Can be replaced with White, Red, Blue, Green light.

2 Different part number available for -UK, -US or -CN plug.



---

## EUROPE

---

### Opto Engineering Europe Headquarters

Circonvallazione Sud, 15  
46100 Mantova, IT  
phone: +39 0376 699111  
eu@opto-e.com



### Opto Engineering Germany

Marktplatz 3  
82031 Grünwald  
phone: +49 (0)89 693 9671-0  
de@opto-e.com

### Opto Engineering Russia

*official partner*  
ViTec Co., Ltd, Fontanka emb., 170  
Saint-Petersburg, 198035, RU  
phone: +7 812 5754591  
info@vitec.ru

---

## UNITED STATES

---

### Opto Engineering USA

11321 Richmond Ave  
Suite M-105, Houston, TX 77082  
phone: +1 832 2129391  
us@opto-e.com

---

## ASIA

---

### Opto Engineering China

Room 1903-1904, No.885, Renmin RD  
Huangpu District 200010  
Shanghai, China  
phone: +86 21 61356711  
cn@opto-e.com

### Opto Engineering Japan

*official partner*  
Optart Corporation  
4-54-5 Kameido Koto-ku  
Tokyo, 136-0071 Japan  
phone: +81 3 56285116  
jp@opto-e.com

### Opto Engineering Korea

*official partner*  
Far Island Corporation Ltd.  
Seoil Building #703, 353 Sapyeong-daero,  
Seocho-gu, Seoul, Korea 06542  
phone: +82 70 767 86098  
phone: +82 10 396 86098  
kr@opto-e.com

**WWW.OPTO-E.COM**